



**PLAN DE MEJORAS PARA EL PROCESO
DE LA EVALUACIÓN DE RESULTADOS DE APRENDIZAJE ESPECÍFICO
(RAE) PARA EL PERIODO 2024 - 1S**

CARRERA DE TURISMO

INGLÉS III

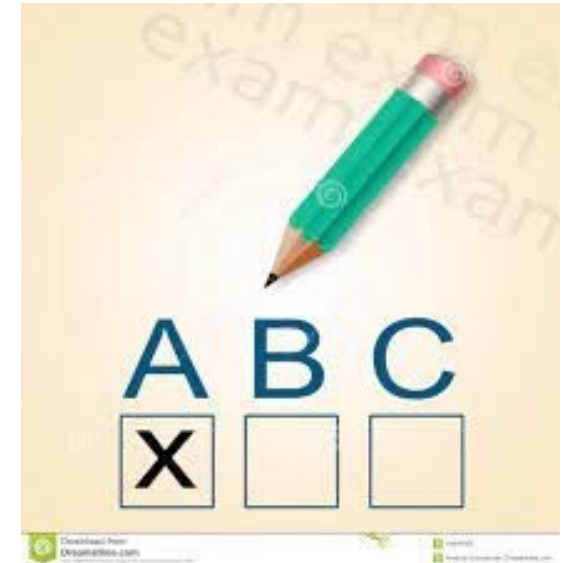
**CAPACITACIONES A LOS ESTUDIANTES
DE SÉPTIMO SEMESTRE**

By: M.T.E.F.L. Andrea Sofía Ribadeneira V.

June - 2024

Tips and Strategies for Answering Multiple Choice Tests

- <https://www.youtube.com/watch?v=0aF7G0TMh7M>
- <https://youtu.be/0aF7G0TMh7M?si=JqRIHJkrTcXBEIgB>



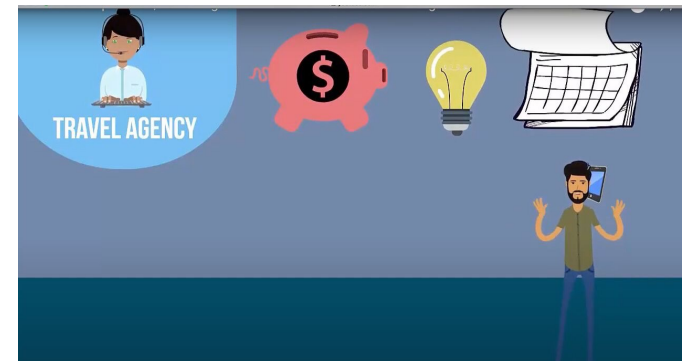
Goal: To use future perfect tense correctly

Teresa has some money and she wants to travel for the summer, but she needs help from the travel agency. Choose what information Teresa would need to give to the travel agency to assist her?

- A. Before getting a tourist package answer, she would need to tell the travel agency what is her budget limit, the idea she has in mind for her trip and how much time she has for the trip.
- B. Before getting a tourist package answer, she would need to tell the travel agency what is her budget, and how much time she has for the trip.
- C. What tour operator she has chosen.
- D. How much the trip consolidators will charge Teresa for her trip.

Before getting a tourist package, she would need to tell the travel agency what is her budget limit, the place that she has in mind for her trip, and how much time she has for the trip.

REF: Amadeus, (2018). "How Tour Operators, Travel Agencies and Consolidators work together" <https://youtu.be/2X0itsT2VN0>



Some References:

- National Park Service. (2023). Sustainable Tourism Guidelines.
- Green Hotel Association. (2023). Sustainable Practices for Hotels.
- Cruise Lines International Association. (2023). Environmental Stewardship.
- United Nations World Tourism Organization. (2023). Sustainable Tourism for Development.
- World Wildlife Fund. (2023). Responsible Wildlife Tourism.
- Coastal Zone Management. (2023). Beach Nourishment and Restoration.

1) A tour operator is planning an eco-friendly vacation package. Please apply the most ethical procedures for the following activities that are the most environmentally sustainable.

- a) Off-road jeep tours in a fragile ecosystem
- b) Guided hiking in a protected national park
- c) Jet ski rentals in a marine reserve
- d) Helicopter tours over a wildlife sanctuary

Answer:

- b) Guided hiking in a protected national park

Explanation:

Hiking in a protected national park is a low-impact, eco-friendly activity that preserves the natural environment and promotes sustainable tourism. It minimizes harm to the ecosystem and educates visitors about conservation.

Source:

National Park Service. (2023). Sustainable Tourism Guidelines.

2) The administrator of a hotel wants to reduce its carbon footprint. Applying concepts which method can help the hotel to reduce its carbon footprint.

- a) Offering disposable plastic toiletries
- b) Installing energy-efficient lighting
- c) Encouraging guests to use single-use water bottles
- d) Using coal for heating

Answer:

- b) Installing energy-efficient lighting

Explanation:

Installing energy-efficient lighting reduces energy consumption and greenhouse gas emissions, making it an environmentally responsible choice in sustainable tourism.

Source:

Green Hotel Association. (2023). Sustainable Practices for Hotels.

3) A cruise company is considering its waste management procedures. Applying concepts and principles which practice method aligns with sustainability.

A cruise company is considering its waste management. Which practice aligns with sustainability?

- a) Dumping waste at sea
- b) Recycling paper and plastics on board
- c) Incinerating all waste on the ship
- d) Sending all waste to landfills

Answer:

- b) Recycling paper and plastics on board

Explanation:

Recycling waste on board reduces the environmental impact of cruises and promotes sustainable waste management.

Source:

Cruise Lines International Association. (2023). Environmental Stewardship.

4) The administrator of tourism destination wants to promote cultural heritage. Applying concepts and principles which approach is the most sustainable.

- a) Building modern skyscrapers in historic areas
- b) Preserving and restoring historical buildings
- c) Replacing traditional crafts with mass-produced souvenirs
- d) Promoting foreign fast-food chains in the area

Answer:

- b) Preserving and restoring historical buildings

Explanation:

Preserving and restoring historical buildings contributes to cultural heritage conservation, fostering sustainable tourism and maintaining the area's unique identity.

Source:

United Nations World Tourism Organization. (2023). Sustainable Tourism for Development.

5) Susan is applying for a job in destination marketing. Apply concepts and principles in a fundamental role of a destination marketing manager.

- a) Ignoring the promotion of local attractions and experiences
- b) Focusing solely on international marketing campaigns
- c) Promoting the unique features and attractions of a destination
- d) Avoiding collaboration with local businesses

Answer:

- c) Promoting the unique features and attractions of a destination

Explanation:

Destination marketing managers are responsible for promoting and showcasing the unique features and attractions of a destination to attract tourists.

Source:

Indeed. (2023). 49 Travel Agency Interview Questions (With Example Answers).

References:

Indeed. (2023). 49 Travel Agency Interview Questions (With Example Answers).

6) Leonor is applying for a job as a tourist guide. Apply translation concepts and principles in a critical aspect of being an effective tourist guide.

- a) Providing inaccurate information to make stories more exciting
- b) Ignoring the interests and preferences of tour participants
- c) Offering engaging and informative narratives about the destinations
- d) Avoiding any interaction with tour participants

Answer:

- c) Offering engaging and informative narratives about the destinations

Explanation:

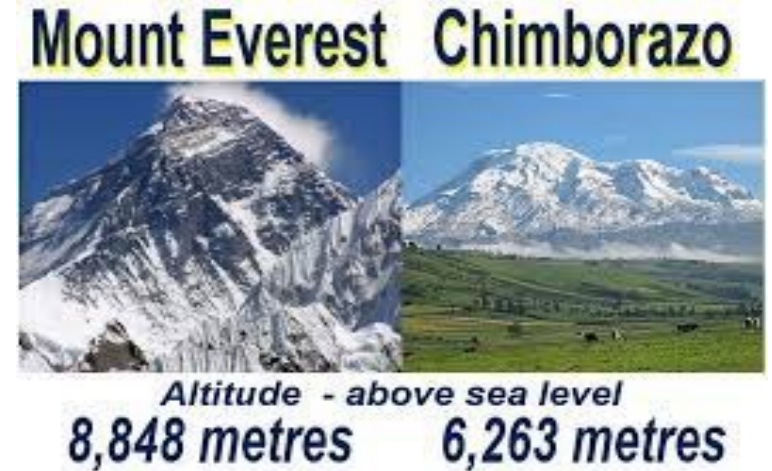
An effective tour guide should provide engaging and accurate information to enhance the tour experience for participants.

Source:

Indeed. (2023). 49 Travel Agency Interview Questions (With Example Answers).

A group of tourists would like to climb the tallest mountain in the world measured from the center of the earth. They are planning and wonder about if the top of Mount Chimborazo is farther from the Earth's center than Mount Everest?

- A. False.
- B. True only when it rains or snows.
- C. False only when it rains or snows.
- D. True.



Answer is #D.

Tan, A. Mt. Everest vs. Mt. Chimborazo: Which is Higher?.

Source: <https://oceanservice.noaa.gov/facts/highestpoint.html>

Thanks much for your concentration!

Good luck on your exam!

I am very happy to assist you all if you need more practice.

Feel free to contact me,

M.T.E.F.L. Andrea Sofía Ribadeneira Vacacela

DOCENTE DE INGLÉS

CARRERA DE TURISMO

FACULTAD DE CIENCIAS POLÍTICAS Y ADMINISTRATIVAS

UNIVERSIDAD NACIONAL DE CHIMBORAZO

Celular: +593 987727600

Correo Electrónico: aribadeneira@unach.edu.ec

